

 **BIOFUEL EXPRESS**



**BIOFUEL
EXPRESS**

**SUSTAINABILITY REPORT
2021**



ABOUT BIOFUEL EXPRESS	4	SUSTAINABILITY MANAGEMENT	12	SOCIAL RESPONSIBILITY	20
		ROLE OF DIGITISATION IN SUSTAINABILITY PERFORMANCE	12	RESPECT FOR HUMAN RIGHTS	20
2021 CO₂ RESULTS FOR OUR CUSTOMERS	5	MANAGEMENT SYSTEMS AND CERTIFICATIONS	12	HEALTH AND SAFETY	20
		CODE OF CONDUCT	14	ZERO TOLERANCE FOR CORRUPTION	20
DECARBONISING THE SUPPLY CHAIN	6	INTERNAL AUDIT	14	A WELCOMING COMPANY	20
		SUPPLIERS OF RENEWABLE FUELS	15	A DEVELOPING COMPANY	20
		SUSTAINABILITY RISK MANAGEMENT	15		
COMMITMENTS TO GLOBAL FRAMEWORKS	8	ENVIRONMENTAL CLIMATE INITIATIVES	16		
SCIENCE BASED TARGETS	8	CONSUME AND SELL SUSTAINABLE PRODUCTS	17		
UN'S SUSTAINABILITY DEVELOPMENT GOALS	9	SUSTAINABLE STATIONS	17		
TRANSPARENCY	10	SUSTAINABLE SUPPLY CHAINS	17		
FEEDSTOCKS	10	SUSTAINABLE MATERIALS	18		
ISCC	10	SCIENCE BASED TARGETS	18		
BIOFUEL EXPRESS INSIGHT	11	SUSTAINABILITY REPORTING	18		

BIOFUEL EXPRESS

BIOFUEL EXPRESS LEADING SPECIALIST AND PIONEER WITHIN FOSSIL FREE ALTERNATIVES

Sustainability to Biofuel Express is the driving force to our existence and why we operate in the business of fuel supply. Our core focus is the 100% biofuels market, and we are passionate about the positive environmental impact of renewable fuels.

Our mission is to increase the availability of biofuels on the market by combining insights into engines, biofuel products and legislation for targeted sales of low-carbon towards the heavy transport sector for the benefit of the environment.

Biofuel Express was founded in 2008 and has – as one of the pioneers in Scandinavia within fossil free fuels – become market leading distributor of 100% renewable biofuel. This has been achieved with a strong station network at strategic key locations supporting hauliers across Sweden and international hauliers visiting Sweden, besides home deliveries (bulk) to our customers.

With almost 14 years of experience, we are specialists in converting fleets of busses and trucks from regular diesel to 100% fossil free operation.

Our continuous ambition is to be the customers' natural choice of supplier and to be the leading biofuel specialist, contributing to significant CO₂ reductions for our customers in the transport sector.

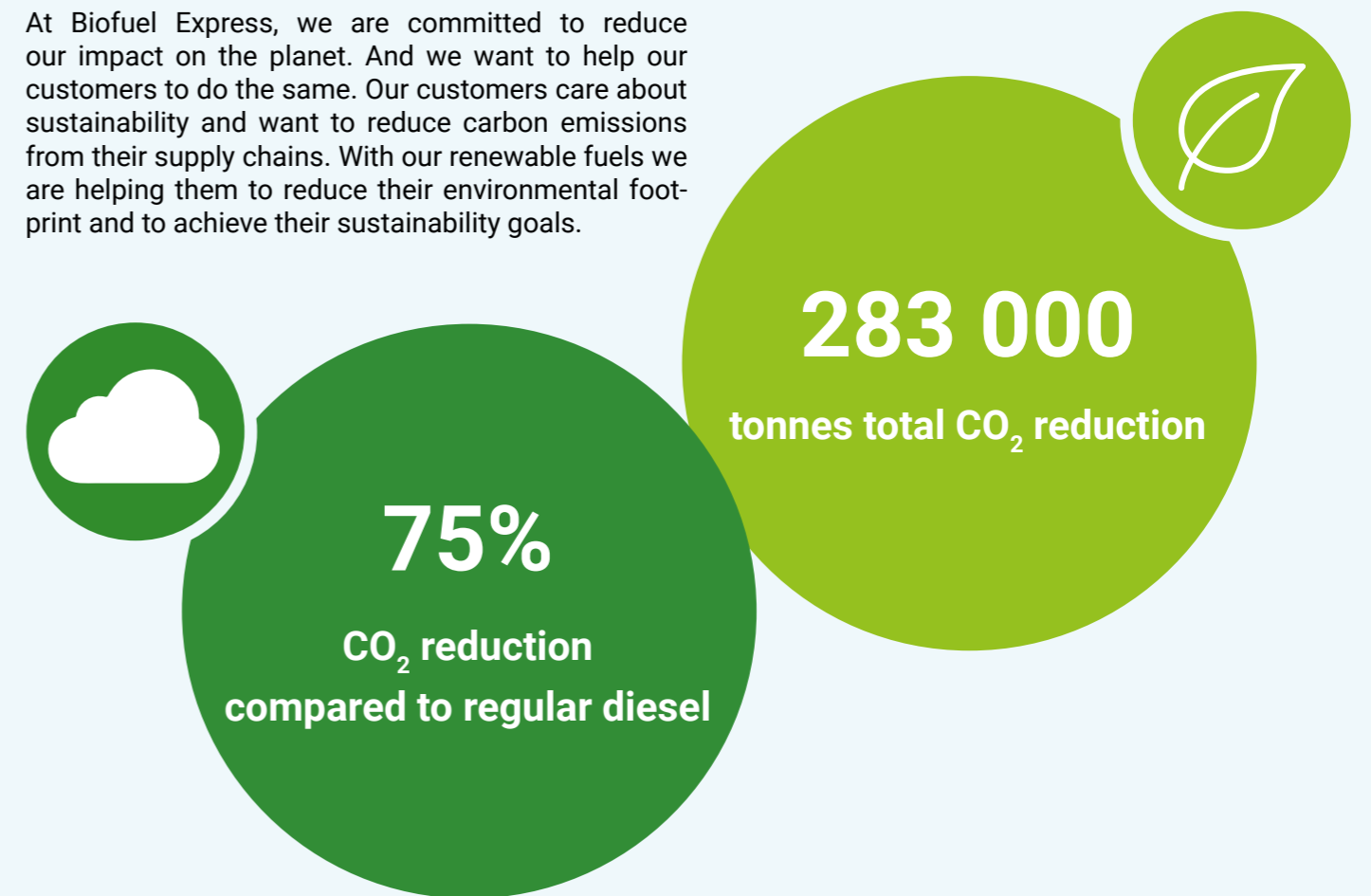
Biofuel Express' sustainability policy harmonises economy with environmental and social responsibility.

The sustainability perspective is present in every business activity within Biofuel Express – from how we treat our customers to each other within the company, as well as the communities in which we operate in, to jointly reduce the carbon impact.

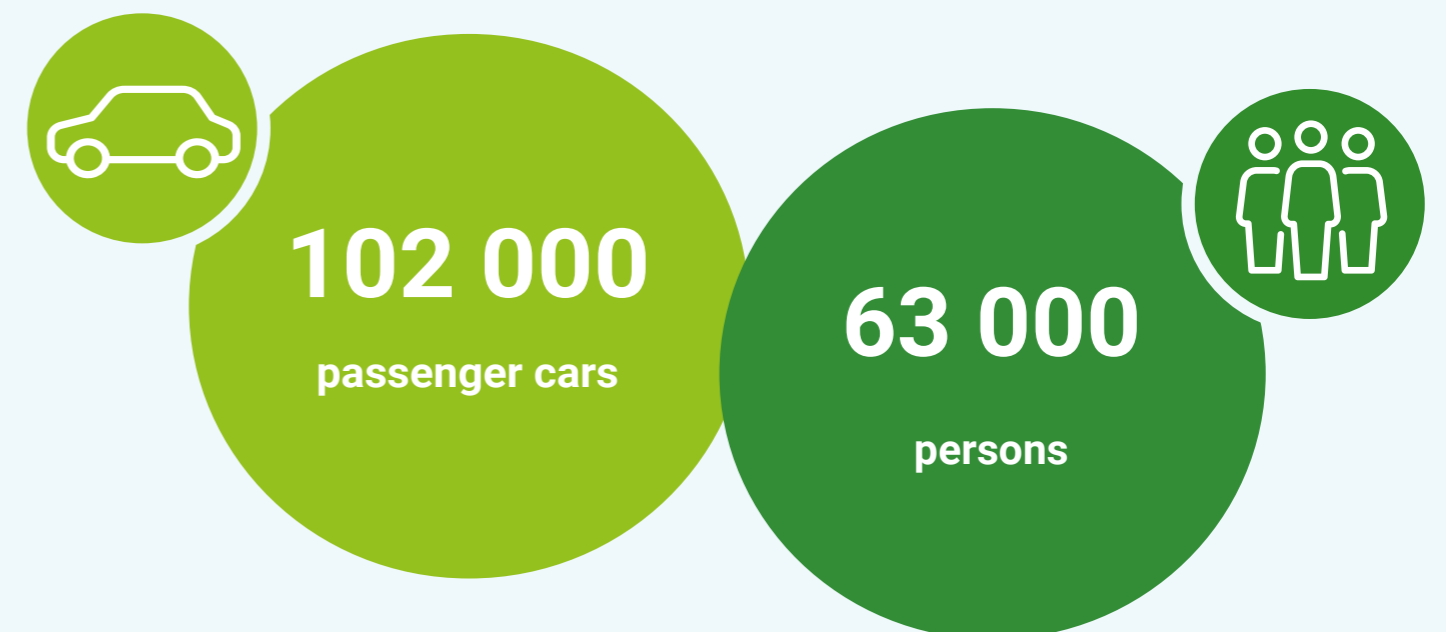
Biofuel Express has committed to several sustainability efforts regarding products, supply chains, the staff, and the company itself and aim to improve in these areas through our environmental goals both directly through our own sustainability initiative and transparency, as well as indirectly through the carbon emission reductions achieved by our customers' choice of fossil free fuel alternatives from Biofuel Express.

2021 CO₂ RESULTS THANKS TO OUR CUSTOMERS

At Biofuel Express, we are committed to reduce our impact on the planet. And we want to help our customers to do the same. Our customers care about sustainability and want to reduce carbon emissions from their supply chains. With our renewable fuels we are helping them to reduce their environmental footprint and to achieve their sustainability goals.



EQUAL TO THE YEARLY EMISSIONS FROM...





DECARBONISING THE SUPPLY CHAIN

Biofuel Express actively works to converting heavy transport into fossil free fuels and to decarbonise the customers' whole supply chain – our goal is to be a part of the whole journey and make our customers' way to less emissions as easy as possible through our renewable products and through our guidance and expertise.

HVO100 Renewable Diesel

- Advanced synthetic diesel (2nd generation)
- Produced from waste and residues from e.g., the fishing and meat industry
- Up to 90% CO₂ reduction
- Superior performance – down to -30°C
- Does not require any engine modifications
- Odourless and reduces engine noise
- Less local particle emissions

B100 Biodiesel RME Premium

- 1st generation biodiesel, FAME
- Produced from sustainable rapeseed oil
- Up to 70% CO₂ reduction
- Can be used in most diesel engines
- Great lubrication qualities
- Good cold weather properties – down to -20°C
- Biodegradable



CASE - FALKÖPING DAIRY: A JOINT EFFORT CAN FUEL CLIMATE ACTION

Biofuel Express has assisted Falköping Dairy and their hauliers in converting to HVO100 Neste MY Renewable Diesel, and thereby decarbonise their entire fleet and the whole supply chain at once.

“ In addition to reduced CO₂ emissions, the advantage of HVO is that you can start the change immediately. You do not need to replace filters or catalysts on the vehicle, so it's like driving on diesel with the vehicles you have. Anything can happen, and then you can just change fuel. You never have to be nervous of standing still,”

- Claes Claesson, Falköpings Refrigerated Transport.

At the dairy approximately 240 million kilos of milk are processed into dairy products, which fill about 25 trucks – every day, all year round. That is a lot of kilometres every day, which carbon footprint are significantly reduced by using HVO100 Neste MY Renewable Diesel instead of regular diesel. By joint effort the hauliers and the dairy came to invest in a fuel tank with renewable diesel. In this way they could take climate action together and decarbonise the entire supply chain.

COMMITMENTS TO GLOBAL FRAMEWORKS

At Biofuel Express we work continuously to optimise and improve our organisation inside and out. To ensure the documentation, the measurements and the validation of the work as well as the results, Biofuel Express has chosen well known and reliable global accepted frameworks. The frameworks are used as guidelines and common goals for the ongoing work in the company.



SCIENCE
BASED
TARGETS

SCIENCE BASED TARGETS

FROM CLIMATE AMBITION TO CLIMATE ACTION

Creating a clear sustainability commitment and demonstrating sustainability leadership was behind the executive decision to commit to Science Based Targets Initiative (SBTi).

By joining SBTi, Biofuel Express is pledging to achieve net-zero emissions of greenhouse gasses, in line with meeting the goals of the Paris Agreement and climate science.

Biofuel Express will reach net-zero target and reduce its environmental impact by increased focus on efficiency and increased use of renewable energy. In 2021 we will be setting our baseline as progress always starts with measuring. Having a robust baseline for GHG measurement for scope 1, 2, and 3 is vital to set proper targets before embarking on a journey towards net-zero. The sign up and commitment will happen in 2022.

Science Based targets (SBTs) are organisational targets that show how much and how quickly organisations need to reduce their greenhouse gas emissions to prevent the worst effects of climate change from happening.

Measuring and implementing sustainable long-term change and minimising our carbon footprint is increasingly becoming a more important criterion for our stakeholders. By taking this step, we are not only accelerating the transition towards a net-zero economy but also increasing our competitive edge.

2022



COMMIT

DEVELOP

SUBMIT

COMMUNICATE

DISCLOSE

Source: Science Based Targets

UN'S SUSTAINABILITY DEVELOPMENT GOALS

United Nations (UN) has in 2015 made a shared blueprint for peace and prosperity for people and the planet now and into the future. The blueprint consists of 17 Sustainable Development Goals (SDGs), which are urgent for all countries to act by. Biofuel Express has taken the SDGs to heart as some concrete focus points that the company can use as guidelines.

Initially, there has been selected four primary goals to lead by:

Affordable and clean energy: Biofuel Express' core values build on clean energy at competitive prices. Outside the organisation Biofuel Express also supports renewable energy sources. In addition to focusing on the expansion of our own renewable products, the company has also invested in Bluetown, which is a project working on increasing the standard of living in developing countries by spreading the Internet through solar-powered WIFI stations.

Biofuel Express will continue its work on making the green products available and to support clean energy everywhere.

Sustainable cities and communities: It's important that the company can vouch for the products sold and the raw materials used. Therefore, palm oil has been phased out as feedstock in the offered biofuel products. Waste and residues will fill up more and more, in regard to gradually getting better utilization of resources. Research into new technologies, reducing greenhouse gases and particles will provide improved and optimised solutions and tools. This benefits both the environment and the climate.

Responsible consumption and production: At the Biofuel Express stations we are very deliberate of optimising and making green choices where it is possible. Specifically, the company supports biodiversity in the local areas through vegetation, and the fuel stations use the latest technology in LED-lighting, which consists of advanced, sensor-controlled lighting systems, that conserve energy when activity is low. It is not only about reducing costs, but also about reducing energy consumption for the benefit of the climate. In addition, we place particular emphasis on high-quality solutions at our stations as well as maintenance, so the replacement of equipment is less.

Climate action: Biofuel Express has made demands of our carriers. We take responsibility in leading the way ourselves by having a positive impact on others and by changing our own supply chain. Therefore, our transporters run primarily on our own fossil free diesel, which reduces CO₂ emissions by up to 90% compared to regular fossil diesel.



TRANSPARENCY

FEEDSTOCKS

Biofuel Express specialises in fossil free fuels, which means our main products primarily are made from renewable vegetable oils, waste and residues.

B100 Biodiesel RME *Premium* is produced from rapeseed oil in a circular process where protein-rich by-product rapeseed meal is used in animal feed, while another by-product, glycerol, is an important component in e.g., pharmaceutical and cosmetics industries.

HVO100 Renewable Diesel is produced of waste, residues and vegetable oils. The residues are primarily from meat and fish industry, but also of used cooking oil.

It is particularly important for Biofuel Express not to compromise on the quality and origin of the materials, and therefore, it must not conflict with deforestation or burden the climate and environment, which is why the product's lifecycle has been ISCC certified.



ISCC

Biofuel Express' products are ISCC-certified, which is one of the World's leading certification systems. Its purpose is to create transparency around sustainable solutions, so that the raw materials are completely traceable throughout the supply chain.

ISCC has set several requirements, which are to:

- Implement social and ecological sustainability criteria
- Monitor forest clearance-free supply chains
- Avoid conversion of biodiverse grasslands
- Calculation and reduction of greenhouse gas emissions
- Establishing traceability in global supply chains

The ISCC certification is the customer's certainty for the raw materials, which our fossil free biofuel products are produced from, have been treated in a sustainable manner and, among other things, do not help to eradicate forests and biodiversity. It can also document that the supply chain helps to reduce CO₂ emissions for the benefit of the climate.

In addition to the green and climate friendly values, it is essential for Biofuel Express to be able to contribute to proper conditions – from the time the raw materials are produced until the fuel ends up at the customer. By establishing sustainable and socially justifiable systems and solutions, nature, and people in future generations are secured, which is an essential part of Biofuel Express' work.

BIOFUEL EXPRESS INSIGHT

INTRODUCING THE FIRST PORTAL FOR CO₂ REDUCTION WITHIN HEAVY TRANSPORT

Biofuel Express Insight is the first customer portal in the Nordics to provide companies with an overview of CO₂ emissions for transport.

Its purpose is to provide full insight and transparency in relation to the customer's fuel consumption and CO₂ emissions, and thereby work as a tool to reduce their climate impact, as well as document the achieved CO₂ savings.

In this way, the customers can meet the increased environment and climate requirements of today and in the future:

- Follow the CO₂ reductions
- Track fuel consumption in real time
- Download Sustainability Certificates
- Insight into raw materials and its origin



Learn how Biofuel Express Insight provides easy overview of fuel consumption and full sustainability transparency and documentation with just a few clicks.

SUSTAINABILITY MANAGEMENT

Embedding sustainability into organisation and business strategy is a key factor for building healthy, stable and resilient business. Biofuel Express has identified areas that have the biggest impact on sustainability and are most relevant to our stakeholders and our business.

Biofuel Express' sustainability efforts are concentrated to improving our performance in these areas, and we have created a strong sustainability vision that is aligned with the organisation's overall business strategy.

We have defined clear sustainability targets and expectations for the organisation which are communicated to all employees, so everyone can embrace the sustainability vision and work towards reaching environmental goals.

Sustainability is also integrated across procurement functions, and we are engaging our business partners and other members of our value chain, ensuring they are undertaking sustainable practices. We are using key sustainability performance indicators to meet the identified sustainability goals, allowing us to detect areas for improvement and gather relevant data to track progress. The KPIs and progress is reviewed on regular basis at the monthly management meetings where sustainability is an important part of the agenda.

ROLE OF DIGITISATION IN SUSTAINABILITY PERFORMANCE

At Biofuel Express we have ensured that our sustainability targets are measurable, viable and impactful. That we have been able to achieve through digitisation of sustainability monitoring tools, which is followed up regularly at weekly team meetings with all employees present.

We use digital tools to map our environmental footprint and assess the impact of environmental shifts at every aspect of our business. With these digital tools we have also been able to offer our customers an increased level of transparency and reliability on sustainability data. This has created a conduit for our company to measure actions, outcomes and results of the sustainability performance.

Utilising data in this way allows Biofuel Express to show clear, measurable progress to our customers on how they are reaching their environmental targets, and further engage with the wider value chain, creating positive impact all the way.

MANAGEMENT SYSTEMS AND CERTIFICATIONS

Within the fuel industry there is always risks related to handling and transporting fuels like leaks, contaminations, or other kind of equipment failure, which can cause environmental damages. Therefore is sustainability management at Biofuel Express Group an essential part of our business and is present in everything we do. Management systems, certified according to ISO 9001 and 14001, for quality and environmental management help us to constantly monitor, develop and improve. They also allow us to assess our performance and continuously improve our operations and ways of working, thus strengthening and future-proofing the supply chain. The management systems help us to achieve the Group's strategic objectives, improve our key performance indicators and manage our operational and environmental performance and risks. They also help us to be a better supplier to our customers and support them in achieving their environmental targets. Biofuel Express was recertified with both ISO 9001 and 14001 in 2021, and Biofuel Express will work on regaining the certifications again next year.

Certifications for Biofuel Express Group are available at www.biofuel-express.com/about/certifications.



BIOFUEL EXPRESS HAS LAUNCHED INTERNAL APP FOR QUALITY AND ENVIRONMENTAL ASSURANCE TO ALL EMPLOYEES

At Biofuel Express, the customer and service are always in focus, and therefore is it important for us to ensure a high level of service and quality when our customers receive fuel or visit our stations as well as secure the environment. That is why an app has been developed to make it even easier for employees to internally report and get an overview if complication should arise at the stations or with a home-based tank.

The app supports and simplify Biofuel Express' continuous strategic work to improve and comply with the ISO certifications within quality management (ISO 9001) and environmental management (ISO 14001).



CODE OF CONDUCT

We have defined policies and working methods for environmental management, health and safety, personnel, equality and our suppliers. Ethical business within Biofuel Express Group is ensured by principles of ethics and sustainability, laid out in the Code of Conduct.

The Code of Conduct is based on UN's Global Compact principles and covers the following areas: human rights, child labor and forced labor, equal opportunities, freedom of assembly, labor and employment conditions, data protection, anti-corruption, conflicts of interest, invitations and gifts, behaviors towards public officials, donations and sponsoring, and money laundering.

The cascading of these principles further down our supply chain is ensured through the "Code of Conduct for Business Partners", which state our values and ways of working to our external stakeholders and makes sure that Biofuel Express' suppliers adhere to high standards of safe working conditions, ethical practices, fair and respectful treatment of employees, as well as taking care of the environment.

The Code of Conduct is a part of every supplier contract and compliance is monitored regularly, during the meetings and supplier audits. All employees are introduced to Code of Conduct when joining the company and the company's board is responsible for updating and adopting the Code of Conduct and the management team is responsible for making the Code of Conduct available to all employees and securing follow up on internal rules and routines that enable all employees to act in accordance with Code of Conduct.

INTERNAL AUDIT

Assessing and monitoring risks, as well as identifying requirements and expectations of the ever-changing stakeholder landscape are the main tasks of Internal Audit, carried out regularly and providing input and recommendations to management for qualitative decision making.

Internal Audit has access and mandate to review all the processes and activities within the company, evaluating adequacy and effectiveness of systems, processes, routines and compliance with laws and regulations.

SUPPLIERS OF RENEWABLE FUELS

At Biofuel Express we are committed to reducing our impact on the planet, and we want to help our customers to do the same. Our customers care about sustainability and want to reduce carbon emissions from their supply chains. With our renewable fuels we are helping them to reduce their environmental footprint and achieve their sustainability goals.

SUSTAINABILITY RISK MANAGEMENT

The Management System ISO 14001 allows us to better identify, assess and control environmental risks that could impact air, land, water and groundwater. We have committed to minimising the environmental footprint and improve our environmental performance. Environmental risk management and mitigation is focused on following goals:

- Prevent harm to human health and the environment,
- Comply with our environmental duties and obligations,
- Meet stakeholder expectations.

To achieve our sustainability goals, we systematically work with environmental aspects and elements that can interact with the environment. Environmental risk management helps us to secure that environmental risks are contained to acceptable levels and compliance is ensured. Results of monitoring and evaluating the environmental aspects are fed into the risk assessment process to identify and reduce emerging problems as early as possible.

ENVIRONMENTAL CLIMATE INITIATIVES

Biofuel Express strives to become the leading specialist in renewable fuels, and we continuously want to improve our actions towards climate, environment and nature in general. Therefore, several focus areas have been identified in order to secure a sustainable development of the company - in short-term and for the future.



CONSUME AND SELL SUSTAINABLE PRODUCTS

One of Biofuel Express' main targets is to increase the availability of sustainable fuel products, in close cooperation with our suppliers, and through expanding the station network with green, renewable fuel products, as well as to offer easy fuelling solutions. This will increase access to renewable fuel on the market, and thereby allow customers options to reduce their carbon footprint, with a target of reducing the customers' total carbon footprint with minimum 70% compared to regular diesel.



SUSTAINABLE STATIONS

When developing new stations, it is important to focus on how to make them durable, sufficient and better for the environment. High quality of the materials at the stations are prioritised, but also elements like biodiversity at the stations and LED-lighting, which are sensor-controlled lighting and conserves energy when activity is low, has been integrated at the stations. This contributes to reduced costs, but in particular to reduce energy consumption for the benefit of the climate.

This is just the beginning towards a greener company, and Biofuel Express will continue to take green technology, materials and solutions into account when developing stations in the future, so the stations can be even better for the environment and emit less CO₂ all the way through from the construction phase to the maintenance of the stations.



SUSTAINABLE SUPPLY CHAINS

Biofuel Express is also working on minimising the CO₂ emissions among the whole supply chain, which includes use of renewable fuel products for its own transports.

At Biofuel Express we work strategically with our main suppliers with an aim of creating a cascade of sustainable practices that flows smoothly throughout the whole supply chain – from feedstock – to biofuel production – and customers' fuel tanks. Decreasing our Scope 3 emissions is a commitment we made when taking an executive decision for joining Science Based Targets Initiative.

Our goal is a net-zero supply chain, and we plan to reach it by:

- Increasing supply chain efficiency
- Shifting to greener technologies
- Establishing long-term sustainability targets
- Requiring our first-tier suppliers to set their own long-term sustainability goals for net-zero
- Including our lower-tier suppliers in our sustainability strategy
- Increasing transparency, reliability and accessibility to sustainability data from the supply chain



SUSTAINABLE MATERIALS

Biofuel Express wants to make better choices in regard to the internal workflows, indoor areas and materials. This has already been introduced by intergrating a paperless operation (Zero Paper Initiative), when it comes to invoicing, contracts, card applications and internal work documents.

The newly acquired interior has been chosen based on elements like high quality, environment, climate and recycling. These elements recure in all the material decisions Biofuel Express takes, right from the Christmas decorations and merchandise for exhibits to the office supplies.



SCIENCE BASED TARGETS

With an intention of walking the talk, Biofuel Express has recently signed up for Sience Based Targats and committed to taking climate action to the next level, by measuring and minimising its environmental impact, in line with meeting the goals of the Paris Agreement and climate science.



SUSTAINABILITY REPORTING

As an essential part of the Biofuel Express Insight-portal a separate module has been developed to ensure our customers valid and reliable data on their CO₂ reductions. This module, which is referred to as "Sustainability Reporting", works as a tool to document the customers' progress and ensures transparency for their stakeholders. This documentation provides all the details needed about their fuel consumption, the feedstock's raw materials and their CO₂ emissions, compared to regular diesel.

The goal is to make our customers' journey to reduce the carbon footprint easy and straightforward and to fulfill the customers' documentations requirements.

The Sustainability Reporting will continuously be developed based on the customers feedback and needs and as new technology evolves.

CASE - BIODIVERSITY AT THE STATIONS: SUPPORTING PLANT GROWTH AND THE NATURAL WILDLIFE



At Biofuel Express we consistently want to keep nature and the environment in mind – especially when it comes to the station development. This also means that, in connection with the expansion of the station network, we have made a small choice for all our stations – a choice which, however, has an essential significance for the local environment in which the stations are built.

Instead of paving the entire station area, Biofuel Express supports the biodiversity by making it possible for plant growth at the stations, which is of great benefit to plants and animals in the local areas.

For us, is it not only a question of making a sensible choice, but also of letting the work for the environment shine through – all the way...

SOCIAL RESPONSIBILITY

Biofuel Express' social responsibility is based on the individual employee's behaviour in the daily operations. As a guide, Biofuel Express has developed several policies and an Employee Handbook, and compliance is followed up regularly by the management team.

A WELCOMING COMPANY

A well-planned introduction is important to new recruits feeling welcome and appreciated and quickly being able to perform well. All new employees are informed of Biofuel Express' vision, mission, strategy and is trained in Code of Conduct the key core areas and policies. Biofuel Express' Code of Conduct is a natural part of the introduction of new employees. Every employee in the Group is responsible for being familiar with its contents. The new employees are also getting an introduction program by relevant co-workers, which pass on knowledge and trains them in programs, communications forms and the industry. Also, all new employees are encouraged to take introduction courses within their field to expand their skills.

A DEVELOPING COMPANY

Biofuel Express strives to be an attractive company, where the employees feel appreciated and have opportunities for development. Building, developing and maintaining competences in the organisation is crucial for our company's further development and securing our position as a leading specialist of biofuels. Competence development through e.g., product training and knowledge sharing, is vital for building value for the customer. Employees are encouraged to develop their expertise in relevant areas, and the need for competence development is discussed at regular follow-up talks.

HEALTH AND SAFETY

Working with people always bares risks which can include stress, harassments, discrimination, occupational accidents, poor office conditions or others. Biofuel Express prioritises employee health and safety and offers a creative and developing social working environment. Biofuel Express's work and policies regarding staff and social conditions are described in Health and Safety Policy, Employee Handbook, and the company has also developed and implemented a Personal Protective Equipment Policy. To avoid any health-related issues, it is important for the management to have an open culture with follow-up employee development

interviews, staff meetings and a direct contact with the employees. Regarding safety on e.g., station sites or at the offices there are safety procedures to be followed in case of emergencies and safety gear given to the employees working at the stations like reflective vests, gloves etc. Within the current financial year, 2021, there has not been any cases of violating the employees' health and safety, and there will continuedly be worked at avoiding any health or safety related cases.

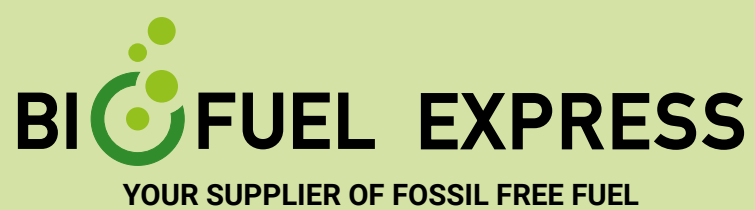
RESPECT FOR HUMAN RIGHTS

Biofuel Express supports and works according to international conventions regarding human rights. Across value chains, there may be a risk of human rights violations and anti-corruption, but Biofuel Express does not accept any form of discrimination and respects employee freedoms and rights and in its operations will work to eliminate all forms of forced labour and child labour. This also applies to the Group's suppliers, which must also live up to applicable labour legislation in the respective country. There have been no human rights violations in 2021 or in any of the previous years, and we do not expect any violations in the following year either. But we still want to focus on the human rights to ensure that all supply chains are free of any human violations like child labour, discrimination, injustice and its equal. This is ensured by looking up and exchanging Code of Conducts, company policies and workflows with all exciting and future partners and suppliers.

ZERO TOLERANCE FOR CORRUPTION

In all contexts, Biofuel Express seeks to encourage and act in line with sound competition principles. All communication should take place in accordance with applicable legislation and Biofuel Express' policies. Biofuel Express' employees are expected to act in an ethical manner in relation to customers, suppliers and other important stakeholders. Biofuel Express' Code of Conduct emphasises that the Group does not accept any form of corruption. In 2021, no cases of corruption have been registered, and it is expected to apply for the following year.





mail@biofuel-express.com
www.biofuel-express.com